

Part Number: PT347-24150

Kit Contents

Item #	Quantity Reqd.	Description
1	1	Convenience Net
2	1	Hardware Bag

Hardware Bag Contents

Item #	Quantity Reqd.	Description
1	2	T-Anchors
2	2	Panel Nuts
3	2	O-Ring

Additional Items Required For Installation

Item #	Quantity Reqd.	Description

Conflicts

None

Recommended Tools

Personal & Vehicle Protection	Notes
None	
Special Tools	Notes
None	
Installation Tools	Notes
Trim Plug Removal Tool	
General Wedge Tool	
Special Chemicals	Notes
None	

General Applicability

--

Recommended Sequence of Application


Item #	Accessory


*Mandatory


Vehicle Service Parts (may be required for reassembly)


Item #	Quantity Reqd.	Description


Legend


 **STOP:** Damage to the vehicle may occur. Do not proceed until process has been complied with.

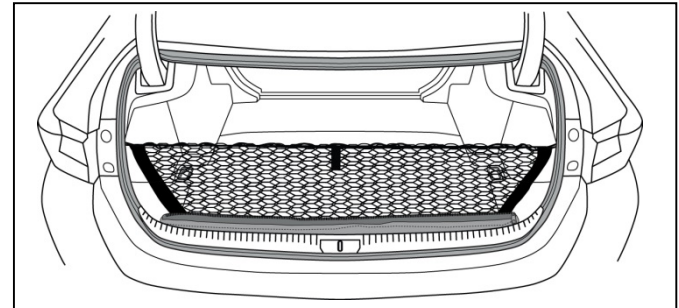
 **OPERATOR SAFETY:** Use caution to avoid risk of injury.

 **CAUTION:** A process that must be carefully observed in order to reduce the risk of damage to the accessory/vehicle and to ensure a quality installation.

 **TOOLS & EQUIPMENT:** Used in Figures calls out the specific tools and equipment recommended for this process.

 **REVISION MARK:** This mark highlights a change in installation with respect to previous issue.

 **SAFETY TORQUE:** This mark indicates that torque is related to safety.



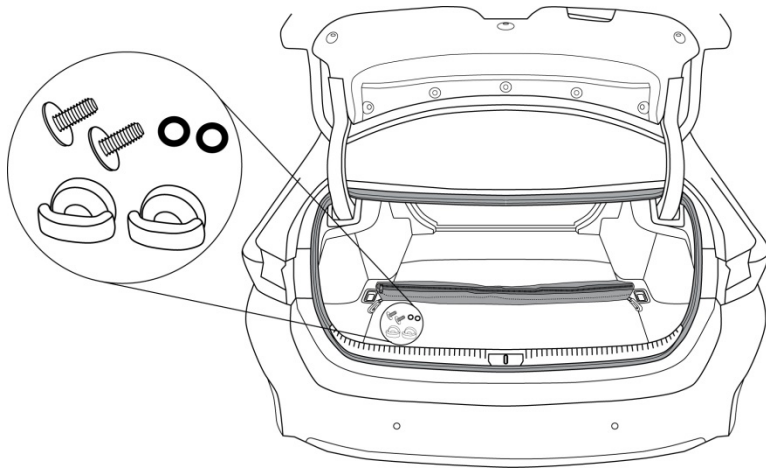
Care must be taken when installing this accessory to ensure damage does not occur to the vehicle. The installation of this accessory should follow approved guidelines to ensure a quality installation.

These guidelines can be found in the "Accessory Installation Practices" document.

This document covers such items as:-

- Vehicle Protection (use of covers and blankets, cleaning chemicals, etc.).
- Safety (eye protection, rechecking torque procedure, etc.).
- Vehicle Disassembly/Reassembly (panel removal, part storage, etc.).
- Electrical Component Disassembly/Reassembly (battery disconnection, connector removal, etc.).

Please see your Lexus dealer for a copy of this document.



Tools Required

Trim Plug Removal Tool



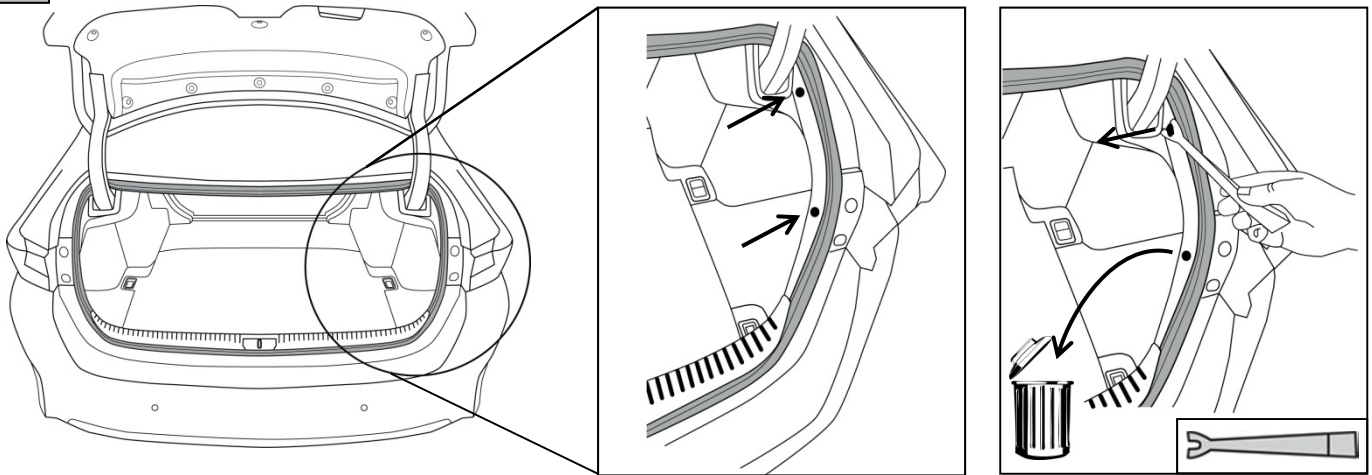
General Wedge Tool



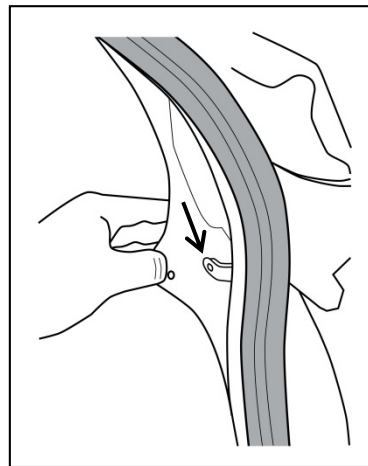
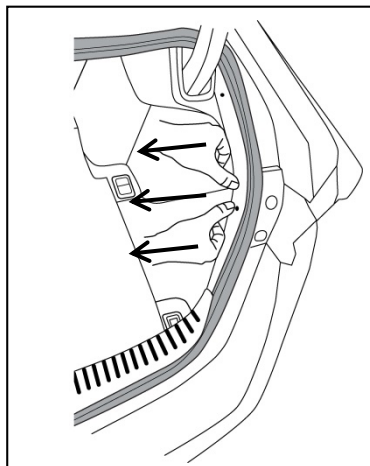
Small Parts Tray



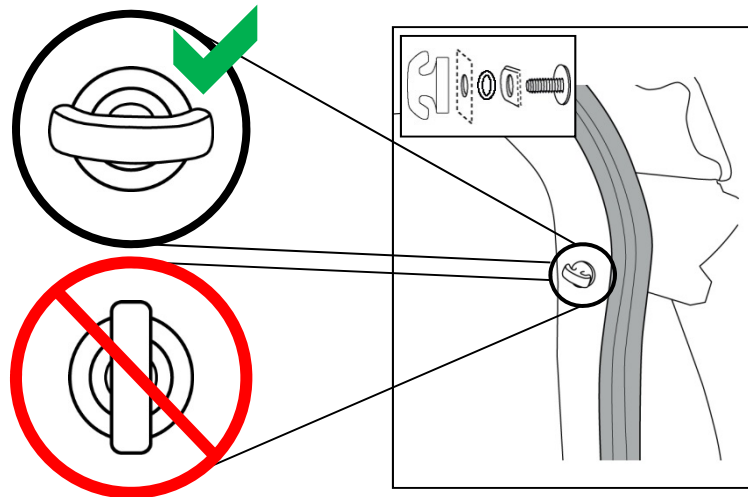
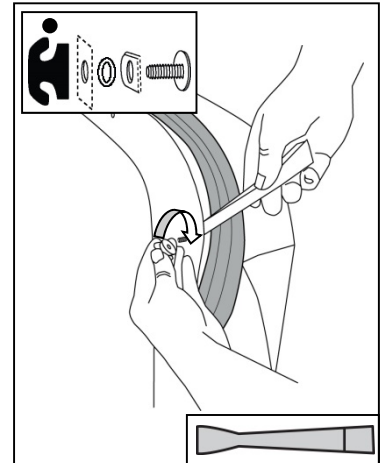
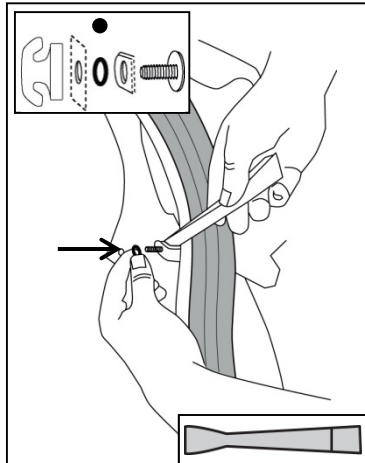
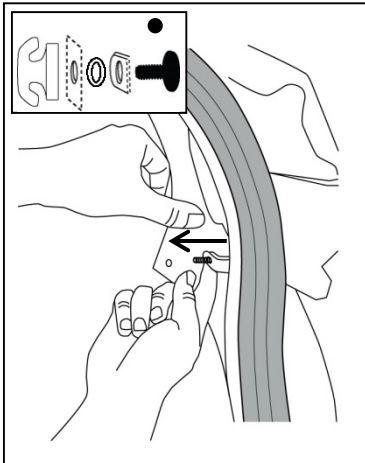
1



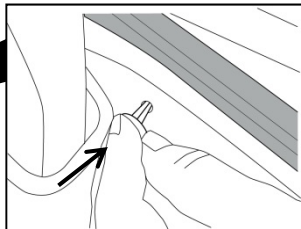
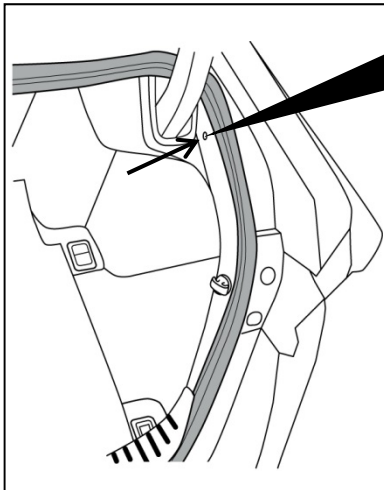
2



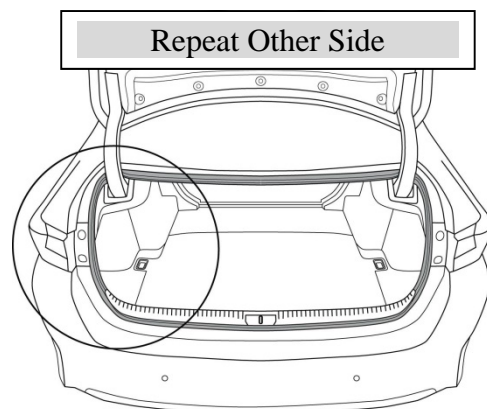
3



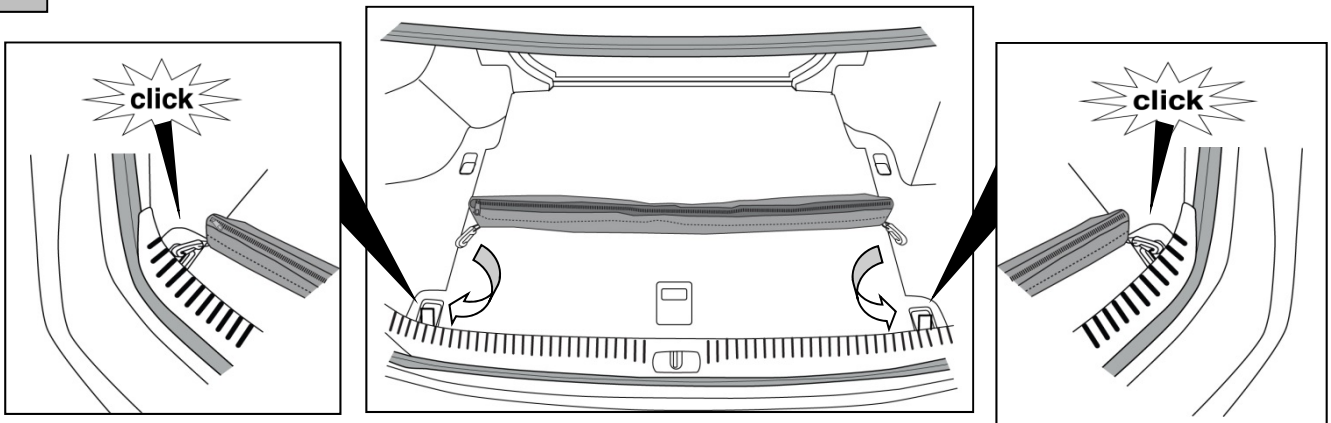
4



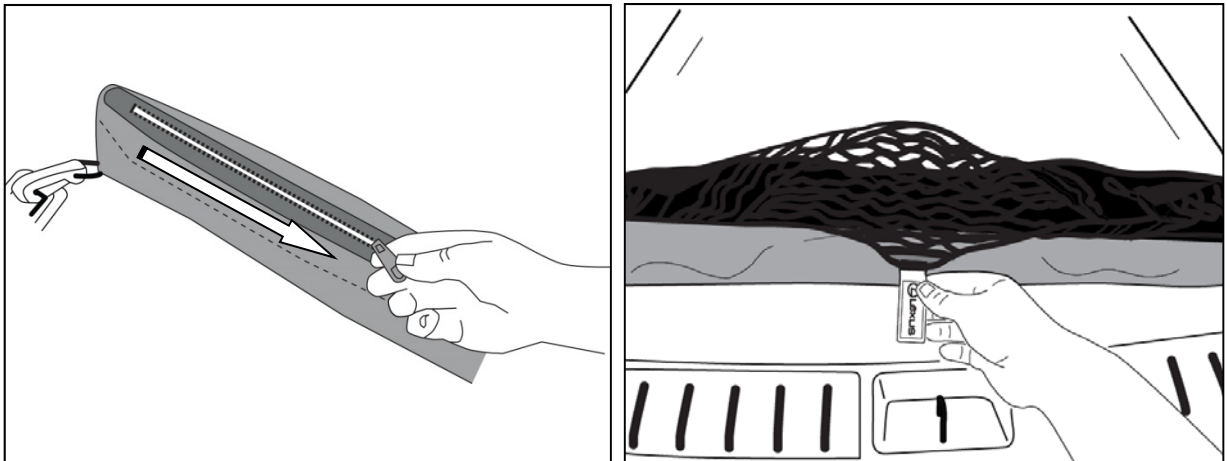
5



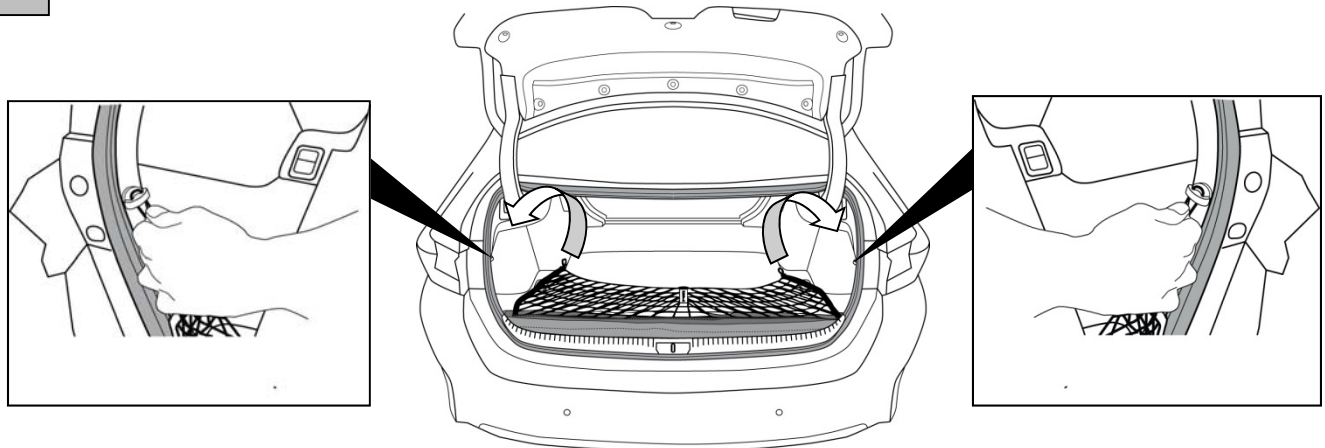
6



7



8



Checklist - these points **MUST** be checked to ensure a quality installation.

Accessory Function Checks

Confirm that the net is attached properly to the anchor points in the vehicle.

Confirm that the net handle is facing toward the rear of the vehicle.

Confirm that the upper loops at the top of the net are attached to the upper T-Anchors of the vehicle.

Confirm that the lower clips at the bottom of the bag are attached to the lower D-Rings of the vehicle.

Vehicle Function Checks

Vehicle trunk operation

Confirm that the vehicle trunk opens and closes without interference from or with the Cargo Net.

Vehicle Appearance Check

After accessory installation and removal of protective cover(s), perform a visual inspection.

Ensure no damage (including scuffs and scratches) was caused during the installation process. (For PPO installations, refer to TMS Accessory Quality Shipping Standard.)